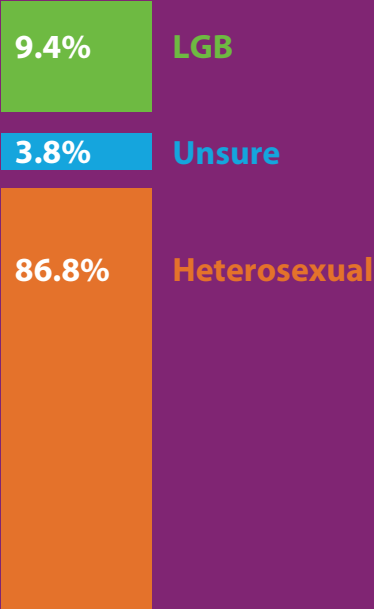


Join the Effort to Make Schools Safer for All Students Including Lesbian, Gay, and Bisexual (LGB) Students

A Special Report from the Youth Risk Behavior Survey (YRBS) 2013 - Duval County, Florida

Self-Identified Sexual Orientation



The YRBS 2013 Survey asked High School students to identify their sexual orientation:

Lesbian, Gay, or Bisexual
Unsure
Heterosexual

What does "unsure" mean? These students may be questioning their sexual orientation, not identifying with the labels presented, or may not understand the question.



Tip the Scale toward Resiliency

All students deserve environments that lead to student success. We tip the scales toward resiliency, and counterbalance adverse experiences by stacking up positive experiences.

What can I do? What can our colleagues do? What can we all do?



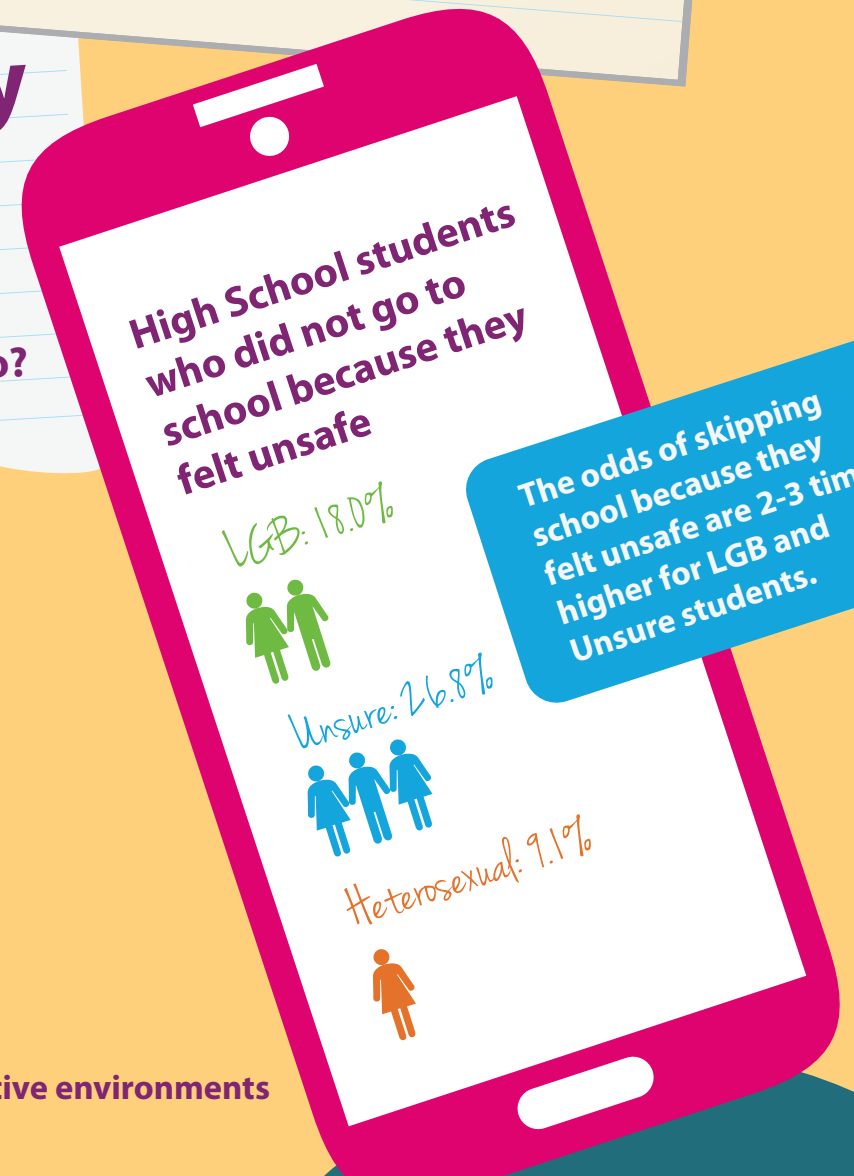
- Being teased, threatened, or bullied
- Being victimized by other forms of violence
- Feeling unsafe at school
- Depression

- Create safe, affirming and protective environments
- Break the silence
- Be aware and involved
- Support family acceptance and engagement

It's your voice. It's your school.
It's your community. It's your safety.

Join the work to make schools safer for ALL students. Contact the Jacksonville Partnership for Promoting the Health of Emerging Adults (JPPHEA) - Safe and Supportive Schools Program.

For more information contact: Jamie Wells, Safe Schools Office, DCPS, wellsj2@duvalschools.org or Cindy Watson, JASMYN, cwatson@jasmyn.org



High School students who were depressed

